

Adelphoi Times

Adelphoi USA

Fall 2010

Day of Giving - Dec. 1, 2010
see page 5

ADELPHOI VILLAGE NAMED EMPLOYER OF THE YEAR

Adelphoi Village was honored with the Employer of the Year award by The Business & Professional Women's Clubs/PA. The mission of the Business & Professional Women's Clubs/PA (BPW) is to achieve equity in the workplace for all women through advocacy, education and information.

This citation is awarded to the business firm or employer who has contributed most, in the opinion of the judges, to the employment, advancement and recognition of women.

Adelphoi presently has 422 women employed and 86 women were hired during the last calendar year.

In addition, Adelphoi provides opportunities for students pursuing undergraduate and graduate degrees. In fact, during 2009 Adelphoi Village provided internship sites for 10 women who completed graduate level internships and 38 women who completed undergraduate internships. Of those 48 students, 11 were employees at the time of their internship and another 4 were hired after their

internship was completed.

Adelphoi is the ninth largest social service agency in the Pittsburgh region.



Dr. Blair Kucinski and Judy Rutter accepted Employer of the Year award given by BPW.

RT. REVEREND PASCHAL MORLINO, O.S.B. RECEIVES HONORARY DOCTORATE

Belmont Abbey College, Belmont, North Carolina awarded Father Paschal Morlino, O.S.B., Adelphoi's founder, an honorary doctorate at its annual commencement May 15.

Father Paschal, who is from Portsmouth, Virginia, graduated from Belmont Abbey College in 1962. He entered the Benedictine community at Belmont Abbey, professing vows on July 11, 1960. 2010 marks Fr. Paschal's 50th anniversary of professing his vows. He celebrated with a mass at Saint Vincent Basilica.



STEELER TRAINING CAMP

Several youth from Benet, Raphael, Vincent and Marker Homes and Greensburg Specialized Independent Living had the opportunity to spend the day with several Pittsburgh Steelers, including James Farrior and Larry Foote, at Steeler Training Camp at Saint Vincent College.



PRESIDENT'S MESSAGE

Blair A. Kucinski,
Ed.D., CEO

Dear Friends of Adelphoi,

Adelphoi USA has embarked on the implementation of a five-year strategic plan, dedicated to improving our financial strength, expanding our services to clients, and enhancing our working environment for our staff. As Adelphoi USA moves forward with this plan, you will notice some changes in how we are organized, how we do business and how we deliver services to our clients.

On July 1, 2010, our corporate structure changed. We now have five subsidiary corporations under Adelphoi USA: 1) Homes Build Hope, Inc., 2) Adelphoi Education, Inc, 3) The Adelphoi Foundation, Inc, 4) Adelphoi Village, Inc., and 5) The Dr. Robert Ketterer Charter School. As part of that endeavor, our management structure was reorganized to align with our new corporate composition. This restructuring will strengthen Adelphoi organizationally and programmatically, and will position us to succeed even in difficult economic times.

Last month, we launched a system-wide effort to improve our business efficiency so we can increase the level of our financial success. This effort is based on Stephen Covey's "Four Disciplines of Execution" and requires significant involvement from our employees. Implementation of this management practice will allow

Adelphoi Village to survive in leaner times, so that we can continue to be around to provide critical services to our clients.

Most importantly, however, is the way we deliver services to our youth and our families. During the recent recession, I frequently told our Leadership Team "no margin, no mission." Everyone understands the need to survive financially. "Margin" and "mission," however, have a reciprocal relationship. Without a strong focus on our mission and high quality services, we have little chance to gain positive outcomes for our kids and attract clients to our programs.

To that end, Adelphoi has begun implementation of The Sanctuary Model of trauma-informed care. Sanctuary Model is an evidence-supported template for system change based on the active creation and maintenance of a nonviolent, democratic therapeutic community. Funded in part by the Staunton Farm Foundation, the Sanctuary Model is the strongest step we can take toward fulfilling our mission. It will result in an improved environment of care, better outcomes for kids, and a safer, more productive workplace.

Adelphoi is a recognized leader in cutting-edge treatment services for kids and families and we are committed to maintaining that reputation. Through a solid foundation of research-based best practices, and high-quality services and programs, we are able to yield positive outcomes for kids and a professional and safe work environment for our employees.

Sincerely,
Blair Kucinski
CEO

Adelphoi Times

Fall 2010

The Adelphoi Times is published by Adelphoi USA and contains information, listings, events, programs and notes pertaining to Adelphoi USA and its services: Adelphoi Village, Homes Build Hope, Dr. Robert Ketterer Charter School, Adelphoi Education, Inc. and Adelphoi Foundation.

Editorial Comments

Megan Keys Trice
Community Relations Coordinator
Phone: 724-537-3052 ext. 1503
Fax: 724-805-0033
E-mail: megan.trice@adelphoiusa.org

Adelphoi USA
352 Main Street
Latrobe, PA 15650

www.adelphoiusa.org



**SHARE THE BLESSINGS OF YOUR HOME.
SOME CHILDREN NEVER EXPERIENCE
THE LOVE OF A FAMILY OR THE
SECURITY OF A HOME.**



BECOME A FOSTER/ADOPT PARENT



**Foster/Adoptive Services
Call Paul Johnson or Angie Needham at
724-838-9074**



INSIDE THIS ISSUE

- **President's Message**page 2
- **In the News**page 4
- **Annual Report**page 8
- **Giving Back**page 12
- **Alumni Update**page 15

Jim Bendel Receives Community Champion Award

The Community Champion Award is given to area individuals who are true "champions" of their community and have positively contributed to the betterment of our region. Former Executive Director Jim Bendel was recognized for this award, which was presented at a special pre-game ceremony at PNC Park on August 20th.



Adelphoi Village Awarded Re-Accreditation

Adelphoi Village is pleased to announce it has been awarded re-accreditation by The Joint Commission in August 2010. Adelphoi Village has gone through the accreditation process on three previous occasions, and was successful each time. Once again, Adelphoi has earned full accreditation, cementing its commitment to children, youth and families and laying a positive foundation for growth.

The Joint Commission evaluates and accredits more than 18,000 health care and behavioral health care organizations in the United States. It is the nation's oldest and largest standards-setting and accrediting body in health care.

The benefits of receiving care at an organization accredited by The Joint Commission include increased confidence in the care provided because you know the organization is:

- continually working to provide the highest quality services
- periodically evaluated by The Joint Commission for compliance with the standards and other requirements
- provided with expert advice and education from The Joint Commission about quality improvement
- able to attract qualified staff because they have more opportunities to develop their skills and knowledge

Adelphoi Village is one of the few child care agencies in the state who has pursued this accreditation. This most recent accreditation reinforces Adelphoi Village's pursuit of program excellence for the benefit of those receiving treatment.



Adelphoi Volunteer Opportunities

Call Megan Keys Trice in Community Relations at 724-537-3052, ext. 1503

Adelphoi Smokeless Bingo Held Every Tuesday

Join us at the Adelphoi Campus (across from JIOIO'S in Latrobe) every Tuesday afternoon at 3:00 p.m.

B	I	N	G	O
○	17	43	○	○
15	26	○	47	62
12	○	FREE	53	71
11	○	35	○	○
○	○	○	60	○

Your support is vital to Adelphoi's work with children, youth and families. Any contribution made through the enclosed envelope will make a difference in the life of a child. Thank you.



CONGRESSMAN TIM MURPHY

Congressman Tim Murphy met with Adelphoi Administrators on July 8, 2010. Discussions included Employee Free Choice Act (EFCA), funds cut from the 2011 budget for the Federal Medical Assistance Percentages (FMAP) and Title IV-E of the Social Security Act.

After the meeting, Congressman Murphy toured our main campus in Latrobe.

Congressman Murphy is serving his fourth term in Congress representing the 18th District of Pennsylvania. He relies on his three decades as a child psychologist to advocate for meaningful reforms in the US healthcare system and is one of only a handful of members of Congress with a background in healthcare.



Congressman Tim Murphy, Blair Kucinski, CEO of Adelphoi USA and Dirk Matson, Assistant to the CEO for Public Policy and Development.

The visit was part of Adelphoi's effort to engage with legislators in order to promote critical services for children, youth and families.

REPRESENTATIVE DAVE REED

Adelphoi staff members Jane Willard, Erik Foust and Jennifer Beldin met with Representative Dave Reed and his Chief of Staff Jonathan Longwill on September 9, 2010. Jane and Erik explained the YES (Your Educational Success) program, Alternative Education and Day Treatment, and toured the building speaking with clients.

Indiana Day Treatment and Alternative Education Programs have served over 200 clients since July 1, 2008. This includes 139 Alternative Education students, 59 Day Treatment students, and 61 YES students.



LEGISLATIVE VISIT

On September 8, 2010 Senator Don White and aide Joe Pittman, Senator Kim Ward and aide Rob Ritson, Representative Mike Reese, and Terri Selembo from Joe Petrarca's office, met with Adelphoi's Leadership – Blair Kucinski, Dirk Matson, Eric Guldin and Bill Gregory. Randy Roadman, board member of Adelphoi USA was also in attendance. The group discussed Adelphoi's growth and needs going into the future.



Blair Kucinski, Randy Roadman, Mike Reese, Kim Ward, Terri Selembo and Don White.





DAY OF GIVING DEC. 1, 2010

24 Hours to give! All contributions made to Adelphoi on this day will receive a portion of matching dollars from the Community Foundation of Westmoreland County!

Community Foundation's Day of Giving is being held on **December 1, 2010**. The Community Foundation is providing \$100,000 in matching dollars and every organization that receives donations during the Day of Giving will receive a pro-rated portion of the match.

Please consider donating to Adelphoi on December 1, 2010.

1. Go to www.westmorelandgives.org
2. Search Adelphoi Village
3. Click to donate

Donation must be made online using a credit card on Dec. 1, 2010 to qualify for the matching gift.



ADELPHOI CELEBRATES 40 YEARS

In 2011 Adelphoi will celebrate 40 years of service to children, youth and families. Founded by Fr. Paschal Morlino, O.S.B., Adelphoi opened its doors to its first resident in the fall of 1971. Fr. Paschal hoped to provide a home and a fresh start to young people who needed help and had no where else to turn. Encouraged by the late Anna Shuck, then director of social services at Latrobe Area Hospital, Father Paschal began looking for a suitable location for his boys' home. His friend, the late George J. Sweeney, D.D.S., then a Saint Vincent College student, joined the search. Within a few months, they had located a property on Mission Road in Unity Township.

With a house in need of repairs, Father Paschal focused on recruiting volunteers and securing support for his project. He began to assemble a crew of college students, parish youth, and other volunteers to refurbish the house.

Once that first home was completed, the program continued to grow, with the addition of other group homes and treatment programs. Today, Adelphoi has expanded into an extensive network of community-based programs and services provided to over 800 children, youth, and families on a daily basis. Adelphoi's full array of treatment options includes: in-home services, group homes, foster care/adoptive services, a charter school, multisystemic therapy, secure care, education programs, day treatment, specialized independent living, alternative education, shelter care, alumni services and affordable housing. While still headquartered in Latrobe, the agency has expanded geographically to include programs in over 30 counties throughout the state. Through the employment of over 700 staff and provision of services to over 2,500 youth annually, Adelphoi has a significant economic impact on the communities in which it resides.

Please watch for upcoming announcements regarding various events planned to commemorate Adelphoi's 40th Anniversary!



Adelphoi Village Campus, Latrobe, PA



PARENT MENTOR PROGRAM

The Parent Mentor Program is a program in Fayette and Westmoreland Counties that is implemented by Adelphoi Village. The Parent Mentor Program (PMP), is a voluntary program, designed to help families meet their goals through a strength-based approach using principles from Family Development Credentialing (FDC). Parent Mentors travel to the family home and work with other services as stepping stones to meet the family's needs.

To achieve the goals laid out in the PMP, the parent mentoring process is a supportive, family-centered approach that respects the family's culture and values. The PMP works with the family to connect and develop their natural supports and community resources: family, friends, faith.

The parent mentor meets with the family to determine the number of sessions that it will take to work through the identified needs and goals.

Families and mentors develop a plan and follow through on individual responsibilities as they work on the family's desired goals. This provides a clear record of the family's progress and gives reason for celebration as goals are met.

The program attempts to bring all family supports and services together as a team to assist the family by working towards the family's common goal. The program also helps with transitioning the families at the end of the program. This also allows the Parent Mentors to keep in touch, celebrate success, and be of help if needed. When transitioning, the mentors and families discuss what the family has accomplished, what they have learned, and what needs and support they will have in the future.

"It's nice having a worker who doesn't judge us," noted a family from Footdale in the program, "They really care what happens to my family."

For admission to the program, youth must live in the home (in Fayette or Westmoreland County) and be between the ages of 0-18, and have social, behavioral, or emotional concerns. For more information on the Parent Mentor Program or to make a referral, please call Jason Zimmerman, 724-420-6374 in Westmoreland County or Tim Truckenmiller, 724-454-9722, in Fayette County.



SUMMER OLYMPICS

Over 200 youth from Adelphoi Village participated in Summer Olympics, held at Latrobe Memorial Stadium. Youth from foster care and residential units spent the day competing in sprints, long jumps, baseball toss and baton races. Each unit designed a flag for the event and they were displayed around the stadium. Youth celebrated with a picnic and awards ceremony after the event.



PENNSYLVANIA STATE RESOURCE FAMILY ASSOCIATION CONFERENCE

The 34th Annual Pennsylvania State Resource Family Association Conference was held in Harrisburg on October 28-30, 2010. Each year during this conference there is an awards banquet that recognizes the Foster Parent and the Caseworker/Social Worker of the year.

This year, Adelphoi Village has award winners from both categories.

Mr. Harvey and Mrs. Nancy Doyle of Derry, PA were honored with the Foster Parents of the Year Award. They have been a foster family with Adelphoi Village since 1994 and have welcomed many foster youth into their home.

"Mr. and Mrs. Doyle have had many years of experience working with foster youth. They have always been welcoming when someone stops by their home and they make anyone feel at ease when working with them," noted Christa J. Bush, M.Ed, Program Director.

Caseworker Matt Iwaniec was awarded with the Caseworker of the Year Award. Matt has worked with Adelphoi Village for over five years and has been a member of the Foster/ Adoptive team since May 2008.

According to Christa, "Matt truly has a gift of engaging families and connecting with youth. He is committed to setting each child up for success and helping the families understand that their role is important. It is clear that Matt has the best interest of youth and families in mind with the work that he does."

ANSWERING THE CALL!

Adelphoi Village's Foster and Adoptive Services is recognizing National Adoption Month in November by highlighting some recent milestones and focusing on goals of the agency in the past year. In 2009, there were 2,175 adoptions throughout Pennsylvania alone, which is comparatively high to recent years. Adelphoi Village supported the state effort by completing nine adoptions.

This year's National Adoption Month theme, "Answering the Call!" is a reminder of the need for permanency for the 129,000 children awaiting a home in the United States, and over 30,000 children in Pennsylvania. Adelphoi Village's slogan, "Loving Homes Needed!" has been part of a campaign to increase visibility and awareness of the need for foster and adoptive families in surrounding communities. It has been seen on yard signs, cable television channels, church bulletin inserts, and pull-tab flyers in local stores. The slogan has served as a banner of recognition of the value placed on families willing and able to open their home to a child in need. Upcoming recruiting campaign efforts include "Loving Homes Needed!" display ads in local school activity and sports programs.

The goal of our endeavors in advertising Adelphoi Village is to shed light on the significant impact families have on reducing the numbers of children in need of a permanent home. Last year, about one out of six children aged out of foster care upon turning 18, returning to a placement setting or independent living because they did not have a permanent home. The goal for Pennsylvania, as stated by The State of Child Welfare (2009) is to take the necessary steps to assure the adoption of children who will not be reunified with their birth families and reduce the amount of times a child moves to prevent traumatic experiences of separation and lack on consistency in their lives (The Porch Light Project, 2009).

Adelphoi Village supports the goals of Pennsylvania by marketing foster care and adoption, but also by supporting our existing families who have answered the call and offer their time and love to improve the lives of the children in their care. The Adelphoi Village Foster Parent Association hosts events for fundraising, including bake sales and gas card drawings, but also participates in events sponsored by the agency to increase interaction among the families, while also enhancing awareness of foster care and adoption in the community. These events include an annual trip to Kennywood, going to baseball games in Pittsburgh, and seasonal picnics and festivals. The Fall Festival held on October 16 at Scalise Gymnasium was an opportunity for current foster and adoptive families to unite and enjoy each other's company, for the public to learn more about Adelphoi Village's Foster and Adoptive Services, and to increase awareness of the dire need for permanent homes for children.

To suggest ideas for marketing of Adelphoi Village's Foster and Adoptive Services, or to request information on becoming a foster or adoptive parent, please contact Recruiters Paul Johnson and Angie Needham at (724) 838-9074, or 1-800-543-5928. The need for adoptive families is so strong in Pennsylvania and the United States. Please help Adelphoi Village in "Answering the Call!"

Ref: Porch Light Project. Pennsylvania Partnerships for Children. 2009. www.papartnerships.org



Annual Report 2009-2010

On the following pages, you will find our agency financial statement as well as our list of donors for fiscal year 2009-2010. We'd like to extend our heartfelt thanks to all those whose generosity have allowed us to continue to nurture and sustain our mission of providing quality services to at-risk youth and their families.

Fiscal Summary

Statement of Operations for Provision of Treatment Services – For the Fiscal Year Ending June 30, 2010

Our Income

We have received for child care services	\$33,389,419
We have received from other sources, including grant revenue and reimbursements	\$2,049,800
Thus, we have or will have received a total of	\$35,439,219

Our Operating Expenses

We paid for child care expenses	\$29,993,599
We paid for management and general expenses	\$4,411,509
Therefore, expenditures total	\$34,405,108
Because our revenue exceeded the amounts we spent for our services, we have a surplus of	\$1,034,111
and therefore, this total is equal to the income we received	\$35,439,219
Amount of surplus this year	\$1,034,111
Beginning balance of net assets	\$13,573,774
Ending balance of net assets	\$14,607,885

Balance Sheet for Provision of Treatment Services – For the Fiscal Year Ending June 30, 2010

Our Resources

Cash	\$8,182,115
Amount due to us for child care services	\$6,604,616
Amount due to us from our affiliates	\$78,069
We have prepaid expenses in the amount of	\$363,583
Total of our current resources	\$15,228,383
Money held and invested for our benefit by the Community Foundation of Westmoreland County	\$523,609
Total of land, buildings and equipment after depreciation	\$729,215
Our total resources	\$16,481,207

Our Obligations

To outside suppliers of goods and services	\$510,758
To our affiliates	\$58,663
To our employees for their services, and to the taxing and benefit agencies for the employees	\$1,298,663
To agencies who have advanced money for services	\$5,238
Total of our obligations	\$1,873,322

Our Equity

Because we owed to others much less than our total resources, we have an equity equal to this amount	\$14,607,885
Therefore, our obligations and our equity equal our total resources	\$16,481,207



2009-2010 Annual Giving

Founder's Circle\$5,000 and up*
 President's Club\$1,000 to \$4,999*
 Director's Council\$250 to \$999*
 Leadership Society\$50 to \$249*
 Associatesup to \$49*

**Levels indicate giving throughout 2009-2010 fiscal year*

Adelphoi USA has endeavored to accurately include everyone who supported our agency in fiscal year 2009-2010. Please contact us at 724-537-3052 ext. 1502 if a correction is necessary. We extend our sincere appreciation to all our supporters.

Businesses & Organizations

Founder's Circle

Staunton Farm Foundation
 Westmoreland-Fayette Workforce
 Investment Board
 Tickets For Kids Charities

President's Club

Amerigas
 Chestnut Ridge Beverage Company
 Citizens Financial Group Inc.
 Commercial Bank & Trust of PA
 DCK North America LLC
 ECC International
 Endo Pharmaceuticals
 Gannett Fleming
 Richard B. Guskiewicz Associates
 The HDH Group
 Highmark Blue Cross Blue Shield
 Industrial Sales & Mfg Inc.
 Jendoco Construction Corporation
 M R Lee Building Materials Inc.
 Master-Lee Energy Services
 Moore Consulting
 Mullen Refrigeration Service, Inc.
 Pittsburgh Pirates Alumni Assn Inc.
 Pittsburgh Steelers
 Poke Run Presbyterian Church
 PriceWaterhouseCoopers LLP
 Saint Vincent College
 Schneider Downs & Company Inc.
 Simpson & McCrady, LLC
 Three Rivers Orthopaedic & Spine
 Products Inc.

Director's Council

84 Lumber Company
 A-Air Company Inc.
 Arnold Palmer Motors Inc.
 Bruns, Gelles and Company, CPA, PC
 Buchanan Ingersoll & Rooney, PC
 Steve Catranel Construction Co Inc.
 Federal Home Loan Bank of Pittsburgh
 First National Bank of Pennsylvania
 Forest Investment, Assoc.
 Glengarry Golf Links
 C. Harper Chevrolet-Geo, Inc.
 Horner, Wible & Terek, PC
 Irwin Interiors System Inc.
 R. G. Johnson Co., Inc.
 G. S. Jones
 Mahantango Enterprises Inc.
 Malin, Bergquist & Company, LLP
 McDonald Snyder, & Lightcap, P C
 Municipal Authority of Westmoreland Co.
 Nakles & Nakles
 National Fuel Gas Supply Corporation
 Overly Door Company
 Packaging Specialist
 Principal Financial Group
 Rotary Club of Latrobe
 Sheetz, Inc.
 Shop N Save - Dailey Ave
 Stone and Company
 TMC USA LLC
 Totteridge Golf Club
 Vision Benefits of America
 Westmoreland Community Action

Leadership Society

Altoona Curve
 Appliance Parts Co.
 Thomas C. Bell Associates
 Jack Bonus Agency
 Brown and Brown of Lehigh Valley, Inc.
 California Army-Navy
 Charter Oak United Methodist Women
 City of Greensburg
 DeLattre Corporation
 Delgrosso's Amusement Park
 Elite Cleaning Service
 Elizabeth Carbide Components
 Erway's Market
 Faris Carpet

Fox & James Inc.
 The Frontier Club
 God's Country Kettle Corn
 Guardian Construction Mgmt Services Inc.
 Hampton Office Products
 Hayden Appraisal Service
 Hopewell Baptist Church
 Latrobe Women's Club
 Laudadio Excavating & Trucking
 Laurel Area Interfaith Volunteer Caregivers
 Laurel Highlands Health Center
 Leona's Greenhouse
 Ligonier Country Club
 Longo Media Group, Inc.
 MV Residential Construction Inc.
 Naser Foods
 Noppe & Associates, Inc.
 Pro Adjuster Health Center
 ProShop USA
 Saint Vincent Archabbey
 Saint Rose Rosary Altar & Christian Mothers
 Shop N Save - Pittsburgh St.
 TCB Construction Company Inc
 University Of Pittsburgh
 Westmoreland County Treasurer

Associates

All Saints Episcopal Church
 Bayla for Commissioner
 Benedictine Society
 Ceratizit USA
 Connect Inc.
 Diocese of Greensburg
 Excela - Latrobe Area Hospital
 First National Bank of Pennsylvania
 First National Insurance Agency Inc.
 Keith Lewis Photography
 Paige Community Coordinators
 A. Raimondo Inc.
 Saint Rose Catholic Church
 Scalise Real Estate Company Inc.
 Standard Bank
 Teeter Associates Inc.
 Union Mission of Latrobe



In Memory and In Honor

In Memory of Sue Berger

Mr. & Mrs. Stephen C. Rogers

In Memory of Grandsons

N. Altman

In Memory of Vincent Gray

Irwin Interiors System, Inc.

In Memory of Ms. Rose Haller

Mr. and Mrs. Joseph Dinsmore

In Memory of Pamela Kastelic

Ms. Kathryn Bates

In Memory of Mrs. Marie Liberatore

Mr. & Mrs. Richard Liberatore

Mr. Todd A. Hrbek

In Memory of Foster Light

Ethel Light

In Memory of John Marco

Mrs. Mary Ann Marco

In Memory of Mr. Larry Mason

Dolores Mason

In Memory of

Mrs. Margaret Newcomer

Ceratizit USA

John and Linda Kulzer

In Memory of Ms. Sara Payne

Mr. and Mrs. Stephen C. Rogers

In Memory of Ms. Anne L. Rosa

Ms. Ann Havron

Mr. and Mrs. Vincent Quatrini, Jr.

Mr. and Mrs. Lawrence Miller

Mr. and Mrs. James Bendel

Mr. Mario Battaglia

Mrs. Phyllis Kosczuk

In Memory of Mrs. Clarise Schooley

Ellen A. Fee

In Memory of Mr. Curt Siegel

Fred and Paula Brothers

Randall Valentine, DMD

In Memory of Lawrence Tiberi

Polly Tiberi

In Memory of Mrs. Julia Vittone

Mr. Larry Vittone

Peggy and Bob Mendte

In Memory of Tom Yeo

Mrs. Phyllis K. Yeo

In Honor of Rev. Donald Mondello

Mrs. Patricia R. Fenton

In Honor of

Right Rev. Paschal Morlino, O.S.B.

Father Michael J. Roach

Harvey and Barbara Weise

In Honor of Mrs. Karyn Pratt

Anonymous

In Honor of Rev. Frank Ziemkewicz

Ms. Margie Kraft

Individuals

Founder's Circle

Mrs. Margaret Newcomer*

Mr. William Petrosky*

Mr. and Mrs. Florian Rajakovich

Mr. and Mrs. Lowell Rein

Mr. Charles Sproule

President's Club

Mr. and Mrs. James Bendel

Mr. John Caputo

Dr. and Mrs. Blair A. Kucinski

Mr. Ted Morris

Mr. Dan Paulone

Mr. Paul D. Puleo

Mr. and Mrs. Stephen C. Rogers

Dr. and Mrs. Fred Schultz

Director's Council

Anonymous

Mr. David Heide

Mr. Roger C. Hine

Mr. and Mrs. Arnold D. Palmer

Mr. and Mrs. Paul Plucker

Mr. Jim Rutkowski, Sr.

Mr. and Mrs. James M. Sadowski

Dr. John T. Santarlas

Roger Tomb

Mr. and Mrs. John Turcik

Leadership Society

Jacqueline Albenze

Anonymous (13)

Dr. Robert C. Bair

Rusty & Lori Baker

Lucy M. DiBagno

Mr. and Mrs. Joe Billetdeaux

Allan & Pat Bobko

Fred and Paula Brothers

Ms. Mildred Burik

Lou & Debi Byham

Mr. Brian A. Candela

Mr. Sean M. Cassidy

Mr. Kip Cherry

Mr. Dave Chesla

Mr. Bill Chesla

Mr. and Mrs. Finley D. Clarke, Jr.

Mr. and Mrs. Doug Clarke

Ms. Mary Ann Coulson

Mr. and Mrs. Brian Danna

Mr. and Mrs. Joseph Dinsmore

Rich and Roz Douds

Mr. James J. Duratz

Mr. and Mrs. Mark V. Dysert

Mr. and Mrs. Eric L. Fulmer

Dr. and Mrs. Gregg Goldstrohm

Mr. and Mrs. Eric Guldin

Mrs. Joseph Heisel, Jr.

Mr. and Mrs. Richard Herd

Matthew & Cari Horner

Mr. John Hovance

Mr. and Mrs. Todd A. Hrbek

Mellie Kepple

Mr. George Kerezsi

Mrs. Phyllis Kosczuk

John and Linda Kulzer

Mr. and Mrs. Thomas A. Lazarchik, Sr.

Mr. and Mrs. Ralph Liberatore

Mr. and Mrs. Richard Liberatore

Mr. Tom Little

Mr. Mike Lukon

Mr. and Mrs. John MacLean

Mr. Clark P. Mangelsdorf

Mr. and Mrs. Francis Marasco

Dolores Mason

*deceased



Mr. and Mrs. Michael McCalpin
 Gene & MaryJo McDonald
 Mr. George McKenna
 Ms. Rita M. McTighe
 Chuck McDowell
 Dr. and Mrs. David G. Meyer
 Michael and Marsha Miller
 Mr. and Mrs. William E. Mitchell II
 Mr. and Mrs. Mark E. Mortimer
 Joe & Barbara Mullen
 Dean and June Neiman
 Mr. Chris Neurohr
 Mr. and Mrs. Oscar J. Overly
 Grace L. Panigal
 Mr. and Mrs. Wallace R. Perkins
 Mr. and Mrs. Joseph Pevarnik
 Mr. and Mrs. Francis E. Pipak, Jr.
 Jerry & Karen Quinn
 Mr. Jeffrey M. Rabish
 Mr. Ronald Rasket
 Dr. Nelson Reed
 Mr. and Mrs. Marc B. Robertshaw
 William and Elizabeth Rosa
 Mr. and Mrs. John Rusbosin
 Norma & Jeff Samide
 Mr. and Mrs. James Sandolfini
 Mr. and Mrs. Mark Sarneso
 Helen Schalcosky
 Dr. and Mrs. Charles Shirley
 Dr. Lucinda and Mr. Gary Soltys
 Jim & Carol Stewart
 Mr. and Mrs. Darrell G. Underwood
 Randall Valentine, DMD
 Pat & Sally Villella
 Mr. Manjiv Vohra
 Dr. Maria Von Mickwitz
 Dr. Joseph Watkins
 Harvey and Barbara Weise
 Mrs. Jane Willard-Palladino

Associates

N. Altman
 Mr. and Mrs. Charles W. Anderson
 Anonymous (12)
 Ms. Dolores Baroli
 Mr. Mario Battaglia
 Ms. Kathryn Bates
 Tamara L. Millen-Bechenbaugh
 Ms. Marion L. Bendl
 Mr. and Mrs. Ivar Berge

Mr. and Mrs. Robert R. Brewer
 Mr. and Mrs. Robert J. Colaianne
 Audrey and Helen Critchfield
 Mr. and Mrs. Nicholas J. Cup, Jr.
 Mr. Dwayne Dean
 Mr. and Mrs. Dennis P. Donati
 Mr. Patrick S. Donnelly
 Mrs. Carol Dunlap
 Mr. and Mrs. Charles P. Dziak
 Mrs. Carol Dziak
 Mr. Warren Edmiston
 Miss Joyce M. Euler
 Ellen A. Fee
 Mrs. Patricia R. Fenton
 Orlie Ferretti
 J. D. Fogarty
 Mr. Mike Fowler
 R. Mark Gesalman
 Mrs. Armeda Gray
 Mr. and Mrs. William Gregory
 Gus Grieder
 Marnie Guy
 Dr. Allison and Mr. Scott Harbart
 Ms. Ann Havron
 Mr. Brian Julian
 Dorothy A. Kamin
 Bob & Arlene Kendra
 Treasure J. Keys
 Tom & Helen Kissell
 Ms. Caroline E. Kondrich
 Ms. Margie Kraft
 Jean and John Krouse
 Ms. Joyce Krznaric
 Mr. Dennis Leschock
 Ethel Light
 Mr. Lee Luckasevic, Sr.
 Mrs. Mary Ann Marco
 Mr. and Mrs. Regis E. Marsh
 Mr. and Mrs. Carl Mattoli
 Mrs. and Mr. Susan McCormick
 Peggy and Bob Mendte
 Mr. and Mrs. Lawrence Miller
 Bette A. Mortimer
 Christopher Mucci, DMD
 Mr. and Mrs. Edwin J. Pruitt
 Mr. and Mrs. Vincent Quatrini, Jr.
 Father Michael J. Roach
 Matt Robson
 Mark & Georgia Robinsky
 Mr. and Mrs. Ed Rusbosin

Mrs. Nancy Rusbosin and Mr. John Kelly
 Mr. and Mrs. Gary A. Rutter
 Someone who cares at WCCC
 Mr. and Mrs. James Sandolfini
 Mrs. Mary Elizabeth Saxion
 Mr. and Mrs. James Schwartz
 Mrs. Madelon U. Sheedy
 Jean Shuster
 Ferdinand & Dorothy Soisson
 Dr. and Mrs. Harold Sternlicht
 Richard & Joanna Stillwagon
 Mr. and Mrs. Kevin Sullenberger
 Mr. and Mrs. Albert Syster
 Mr. and Mrs. Albert D. Taymans
 Dr. and Mrs. James Thomas
 Polly Tiberi
 Mr. Joseph V. Trupkovich
 Mr. and Mrs. Paul A. Uhrinek
 Mr. Robert Vella
 Mr. Larry Vittone
 Ted W. Walker
 Mrs. Rosemary Walko
 Mrs. Helen Wasyluk
 Mrs. Phyllis K. Yeo
 Mrs. Amelia Zakour

Genesis Council

Mr. and Mrs. James Bendel
 Mr. and Mrs. and Mrs. Glenn
 Cavanaugh
 Mr. and Mrs. Dirk Matson
 Dr. and Mrs. William Kerr
 Rt. Rev. Paschal Morlino, O.S.B.
 Mr. and Mrs. Wallace R. Perkins
 Mr. and Mrs. Michael Quinlisk
 Mr. and Mrs. Robert Rhen
 Mr. and Mrs. Randy Roadman
 Mr. and Mrs. Chad Ruffner
 Mrs. Marlene Scatena
 Dr. Lucinda and Mr. Gary Soltys
 Jim and Carol Stewart
 Mr. and Mrs. Ken Swanson



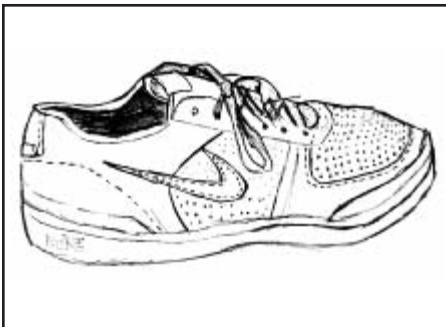
GIVING BACK

to Our Neighbors and Communities

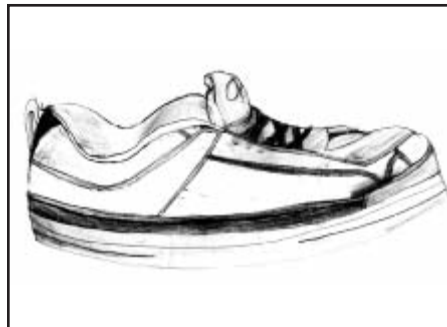
JUVENILE DIABETES FUNDRAISER

Middle Creek I and II Secure Units teamed up to raise funds for the Juvenile Diabetes Research Foundation. Together, with the guidance of Therapist Emily Pittman, they sponsored Paige's Pal for the JDRF walk on September 11, 2010. Paige Watson is a 5-year-old girl from Latrobe that has been dealing with this horrible disease for four years. To stay alive, she endures multiple finger pricks a day and continually infuses insulin through a pump that she is connected to 24 hours a day. Paige came into the Middle Creek units and talked to the residents about Type 1 Diabetes. Both units jumped on the chance to help this sweet little girl. The residents cut out and decorated nearly 300 high top sneakers for the Walk For the Cure that were sold at various Adelphoi offices for \$1.00. The residents raised \$314!

- Emily Pittman, LSW



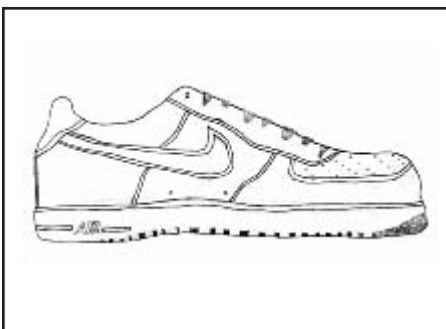
Mark L.



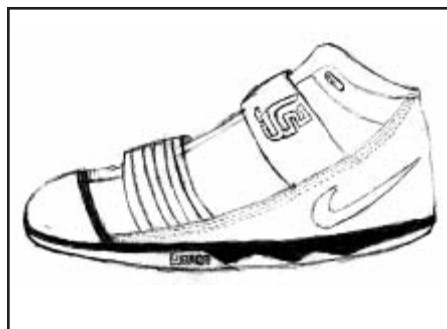
Mike B.



Jon M.



Corey S.



Narlon



Cody T.



ADELPHOI LANDSCAPING PROGRAM A SUCCESS

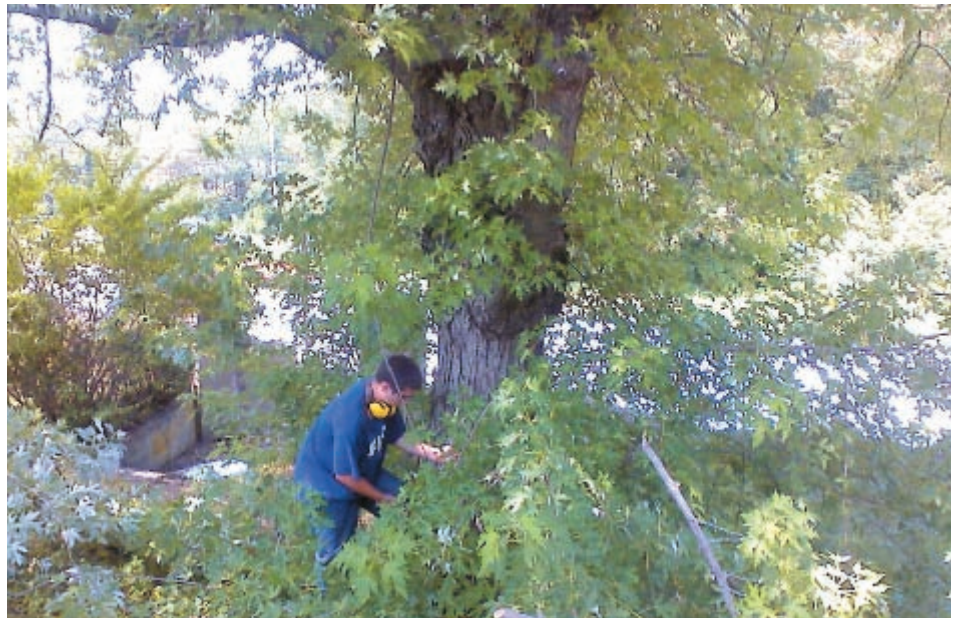
Blaine Durst, Counselor II, led a unique landscaping project manned by youth from various residential programs. The program was designed to promote competency development in clients, as well as assist those youth in restoring their community by paying outstanding balances on court ordered restitution, fines and court costs.

Mr. Durst worked with group home supervisors to select clients who have progressed in treatment and were determined as eligible for further responsibility. Residents were selected based on program performance, responsibility, maturity, and a desire to learn new skills.

Safety training was a part of this program for the youth, and included topics such as proper clothing, footwear, eyewear, and safe distances to operate various machines.

Following the purchase of required equipment and tools, the selected workers began landscaping duties at Sweeney Home. The crew pruned the lawn, trimmed bushes, removed an old foundation from a previously existing tool shed, weeded flower beds, and placed new mulch in previously landscaped areas, as well as other jobs that required attention around the residence. Since the completion of the initial Sweeney Home project, the landscaping crew has completed the same tasks at Marker Home, Susan's Place, Colony Home, Raphael House, and Margaret Home. In addition, the crew has maintained flower beds in various locations throughout the Latrobe area, as well as completing lawn care services for Faith in Action.

Youth from Allegheny, Butler, Franklin, Beaver and Philadelphia Counties and from Berkeley County, West Virginia have had the opportunity to learn new skills and use the money they have earned to restore their



community through restitution and fine payments. They are also able to save money for future opportunities including trade school or college.

Our hope is to continue to develop this program so that Adelphoi Village youth will have an opportunity to restore

the community, pay back their court ordered restitutions and fines, and develop skills or interests for the future.

- Steve Mortimer
Supervisor



SANCTUARY MODEL STEERING COMMITTEE KICKS OFF TRAINING OF CORE TEAM MEMBERS

The Sanctuary Steering Committee comprised of Lorin Zimmerman, Theresa Matson, Mark Mortimer, Kip Cherry, Wally Perkins and Christa Bush is proud to announce the members of its Core Team. The Sanctuary Model of trauma-informed care is a method of creating or changing an organizational culture that more effectively provides a cohesive context within which healing from psychological and social traumatic experience can be addressed. The initiative at Adelphoi is funded in part by the Staunton Farm Foundation.

In order to implement the model at all levels of the agency, a "Core Team" of individuals representing each department was chosen to become trained in the model and its concepts. Ruth Ann Ryan, a co-founder of the model visited Adelphoi from September 27-29, 2010. She visited several group homes, foster care, some education programs and assisted the steering committee in facilitating training at the Core Team Retreat. We want to congratulate the following staff members for participating in the initial Retreat held on September 29, 2010:



*Eric Lasure
Steve Mortimer
Todd Martin
Jason Merwin
Misty George
Doug Clarke
Nick Ashley*

*Christine Sims
Dave Hovance
Mike Kogut
Shelby Doyle
Eric Guldin
Les Strader
Gary J. Soltys*

*Kay Flack
Jen Beldin
Brenda Greene
Mindy Thomas
Amy Overly
Marty Landolina
Jackie Kaputa*

*Eric Dadey
Jonnette Metarko
Jessica Roscoe
Barbara Fauset
Nicole Myers
Jodie Demase
Glenna Stynchula*

OUR MISSION FOR THE SANCTUARY MODEL AT ADELPHOI

Adelphoi Village will embrace a model of Trauma Informed Care that will empower everyone, including clients and staff, to feel safe, engage in emotional management, experience and identify loss and work towards future goals.

This is a process which will be implemented over time and will be customized to meet program, staff and client needs.

ANNUAL FWC SUMMER PICNIC

The Foster Care summer picnic was held this year at Youngwood Park and Pool on Friday, July 30. There were 102 attendees including 13 foster/adoptive families and FWC staff. FWC Program Director, Christa Bush, presented the foster families with Certificates of Appreciation for their years of service to Adelphoi Village.





Alumni Update

SUITCASES FOR SUCCESS

The majority of kids arrive at Adelphoi with only a few belongings stuffed into a garbage bag. In order to make their discharge from our program a positive experience, and to reward them for their hard work, we began the "Suitcases for Success" program. Through this initiative, we collect new or gently used suitcases or duffel bags for the kids as they move on to another placement, foster care, or back home.

Stephanie Albaugh conducted a suitcase drive at Christ United Church of Christ in Latrobe. Many new, used and like new suitcases, duffel bags, and book bags were donated for this "Suitcases for Success" initiative.

Thank you, Stephanie and the members of Christ United Church of Christ for helping the youth in our programs!

If you'd like to donate a new or gently used suitcase or duffel bag,

please contact Brandon Costello at 724-537-3052, ext. 1210.



ADELPHOI ALUMNUS PURSUING GOALS

Ashley M., who is attending Carlow and majoring in Forensic Accounting, has 78 credits completed and has a cumulative GPA of 3.846!!! She has been the recipient of the Westmoreland Regional Hospital Scholarship, Susan's Place Scholarship, and the Charles and Portia Shirley Achievement Fund. She has worked as a waitress throughout her educational pursuits. She has always been very grateful to Adelphoi Village and its donors for supporting her educational goals.



Social Network With Us!

Look for us on Facebook

www.facebook.com/AdelphoiVillage

European Serenade Amsterdam to Vienna – 14 Days

September 17-29, 2011, from \$4599 per person*

(Non-Refundable Deposit of \$200 p/p due at time of sign-up)

For further information contact Pam Adair of The Catholic Tour at 877-627-4268 or email pamadair@thecatholictour.com or email pamorlino@aol.com.

Note to Alumni:

Any alumnus interested in our scholarship program may learn more by going to our web page at www.adelphoivillage.org and clicking on the alumni bullet to secure details.

Shelly Hack

ALUMNI COORDINATOR

724-841-0987

1-800-225-2633

shelly.hack@adelphoivillage.org



Pilgrimage to the Holy Land & Jordan

in Celebration of the

40th Anniversary of Adelphoi Village

March 21-30, 2011, \$2799 per person*

(add \$119 departure tax, \$412 fuel surcharge, and \$239 for optional travel insurance)

Depart Washington Dulles Airport

Spiritual Director: **Rev. Paschal A. Morlino, O.S.B.**, Founder of Adelphoi Village

For further information call Rev. Paschal A. Morlino, O.S.B., Founder of Adelphoi Village at 410-947-4988 or email pamorlino@aol.com or call The Catholic Tour toll-free 1-888-465-9868 or email info@thecatholictour.com





Sultan



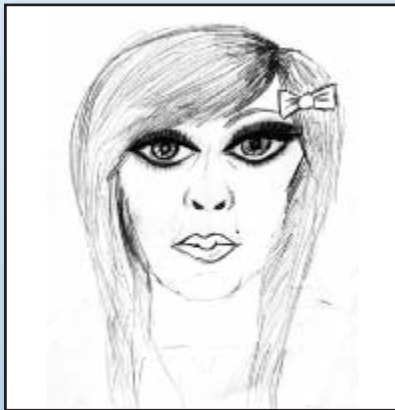
Shellyann



Will



Markeif



Taylor



Hahkeem